

Kalmar DRF450-65S5L

Lifting data	DRF450-65S5L
Lifting capacity at load centre L4, rated – at max. lifting height (kg)	45000 – 39000
Lifting capacity at load centre L5, rated – at max. lifting height (kg)	30000 – 30000
Lifting speed, unloaded – at 70% of rated load (m/s)	0,21 – 0,21
Lowering speed, unloaded – at rated load (m/s)	0,21 – 0,26

Driving data	
Travelling speed forward, unloaded – at rated load (km/h)	25 – 21
Travelling speed backward, unloaded – at rated load (km/h)	25 – 21
Gradeability at 2 km/h, unloaded – at rated load (%)	36 – 20
Max. gradeability, unloaded – at rated load (%)	50 – 34
Drawbar pull, max (kN)	380
Stability according to EN 1459	

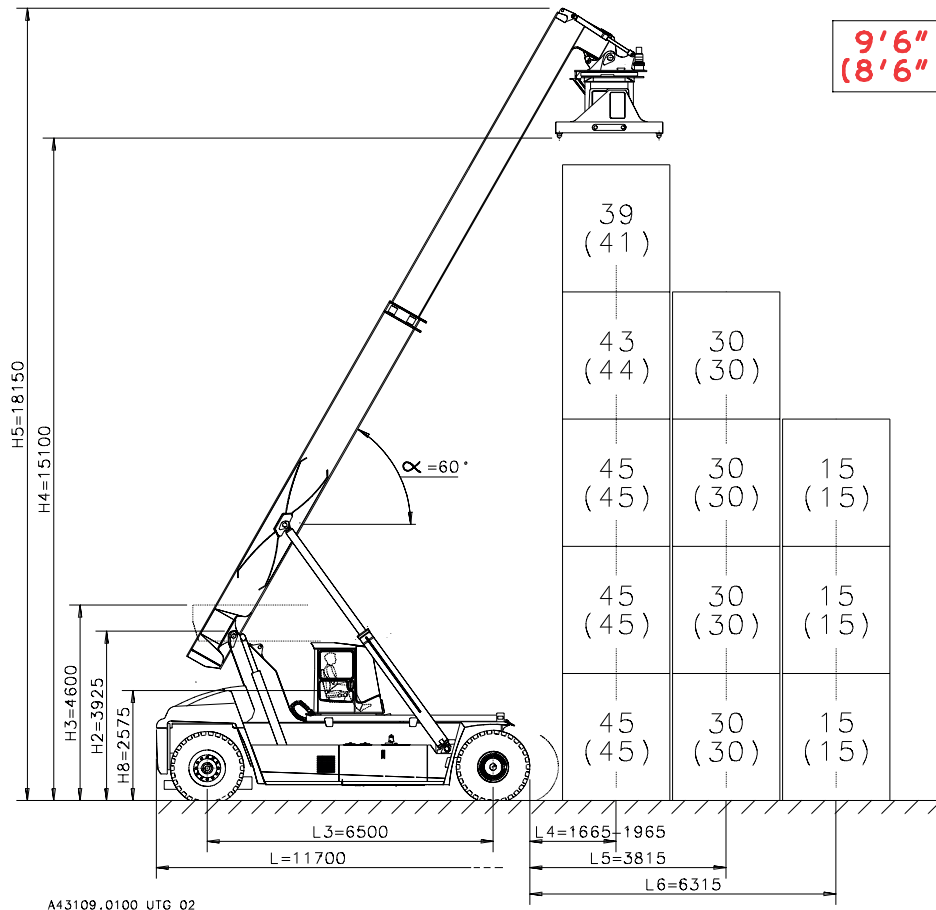
Weight of truck	
Service weight (kg)	67700
Axle load front at load centre L4, unloaded – at rated load (kg)	34700 – 99100
Axle load front at load centre L5, unloaded – at rated load (kg)	38800 – 90200
Axle load front at driving position according to EN 1459 and rated load (kg)	88100
Axle load rear at load centre L4, unloaded – at rated load (kg)	33000 – 13600
Axle load rear at load centre L5, unloaded – at rated load (kg)	28900 – 7500
Axle load rear at driving position according to EN 1459 and rated load (kg)	24600

Engine	
Manufacturer – type designation	Cummins QSM11
Fuel – type of engine	Diesel – 4 stroke
Number of cylinders – compression (cm ³)	224 – 2000
Power according to ISO 3046 – at revs (kW/rpm)	1575 – 1400
Torque according to ISO 3046 – at revs (Nm/rpm)	6 – 16.3:1
Alternator, type – power (W)	AC – 2400
Starting battery, voltage – capacity (V – Ah)	2×12 – 140
Fuel consumption, normal driving (l/h)	18

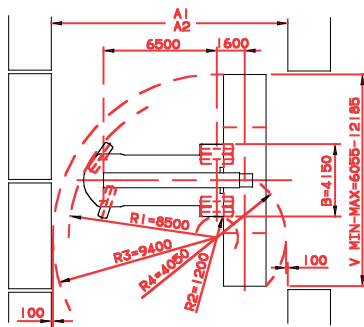
Transmission	
Manufacturer – type designation	Dana – 15.7TE32418
Clutch, type	Torque converter
Gearbox, type	Powershift
Number of gears, forward – reverse	4 – 4
Driving axle, type	Differential and hub reduction

Wheels	
Type	Pneumatic
Dimension, front – rear (inch)	18.00×25 – 18.00×25, PR40 E4
Number of wheels, front – rear (*driven)	4* – 2
Pressure (MPa)	1,0

Miscellaneous	
Steering system, type – maneuvering	Servo assisted – Steering wheel
Service brake system, type – affected wheels	Wet disc brakes – Drive wheel
Parking brake system, type – affected wheels	Spring brake – Drive wheel
Max. hydraulic pressure (MPa)	25,0
Noise level according to DIN 45635 part 36, cabin (db(A))	70
Noise level according to 2000/14/EC, outside (db(A))	–
Fuel volume (l)	550
Hydraulic oil volume (l)	600
Overload protection	Electronic



A43109.0100 UTG 02



Dimensions

		DRF450-65S5L
Beam angle, max (°)	α	60
Attachment rotation, CW – CCW (°)	β	195 – 105
Min. aisle width for 90° stacking with 20' containers (mm)	A1	11600
Min. aisle width for 90° stacking with 40' containers (mm)	A2	13600
Sideshift \pm (mm)	V1	± 800
Track (c-c), front – rear (mm)	S	3030 – 2600
Ground clearance, min. (mm)		250

The design and materials specification are subject to alternation without prior notice.
Tolerances according to K-standard 95430.0008/0009

Cargotec improves the efficiency of cargo flows on land and at sea – wherever cargo is on the move. Cargotec's daughter brands Hiab, Kalmar and MacGregor are recognised leaders in cargo and load handling solutions around the world. Cargotec's global network is positioned close to customers and offers extensive services that ensure the continuous, reliable and sustainable performance of equipment. Cargotec's class B shares are quoted on the NASDAQ OMX Helsinki. www.cargotec.com



Cargotec Sweden AB
Torggatan 3
SE-340 10, Lidhult, Sweden
tel. +46 372 260 00
fax +46 372 263 90
www.cargotec.com